

LEGEND

- Municipal Boundary
- State Road
- Township Road

ZONING LEGEND

- CONSERVATION
- RURAL AGRICULTURAL
- RESIDENTIAL
- VILLAGE RESIDENTIAL
- VILLAGE COMMERCIAL
- COMMERCIAL RECREATION
- AIRPORT HAZARD ZONE

(Source: Warrington Township)

WARRINGTON TOWNSHIP YORK COUNTY, PENNSYLVANIA

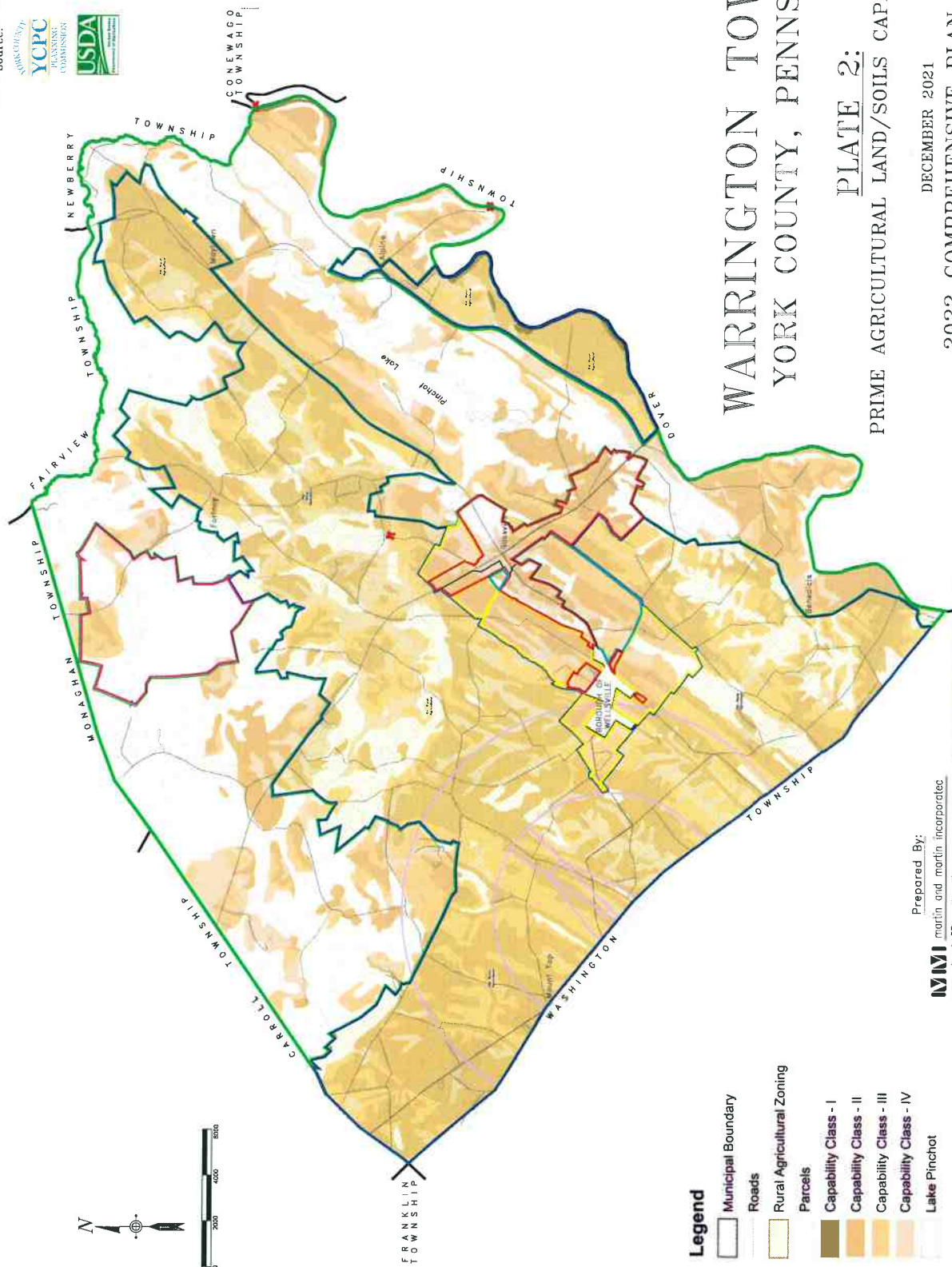
PLATE 1: ZONING MAP

DECEMBER 2021

2022 COMPREHENSIVE PLAN UPDATE

MM Prepared By:
martin and martin incorporated
phone: (717) 377 south main street • suite A
284-6759 chambersburg, pennsylvania • 17201

Source:
 YCPC
 YORK COUNTY
 PLANNING
 COMMISSION
 USDA



- Legend**
- Municipal Boundary
 - Roads
 - Rural Agricultural Zoning
 - Capability Class - I
 - Capability Class - II
 - Capability Class - III
 - Capability Class - IV
 - Lake Pinchot

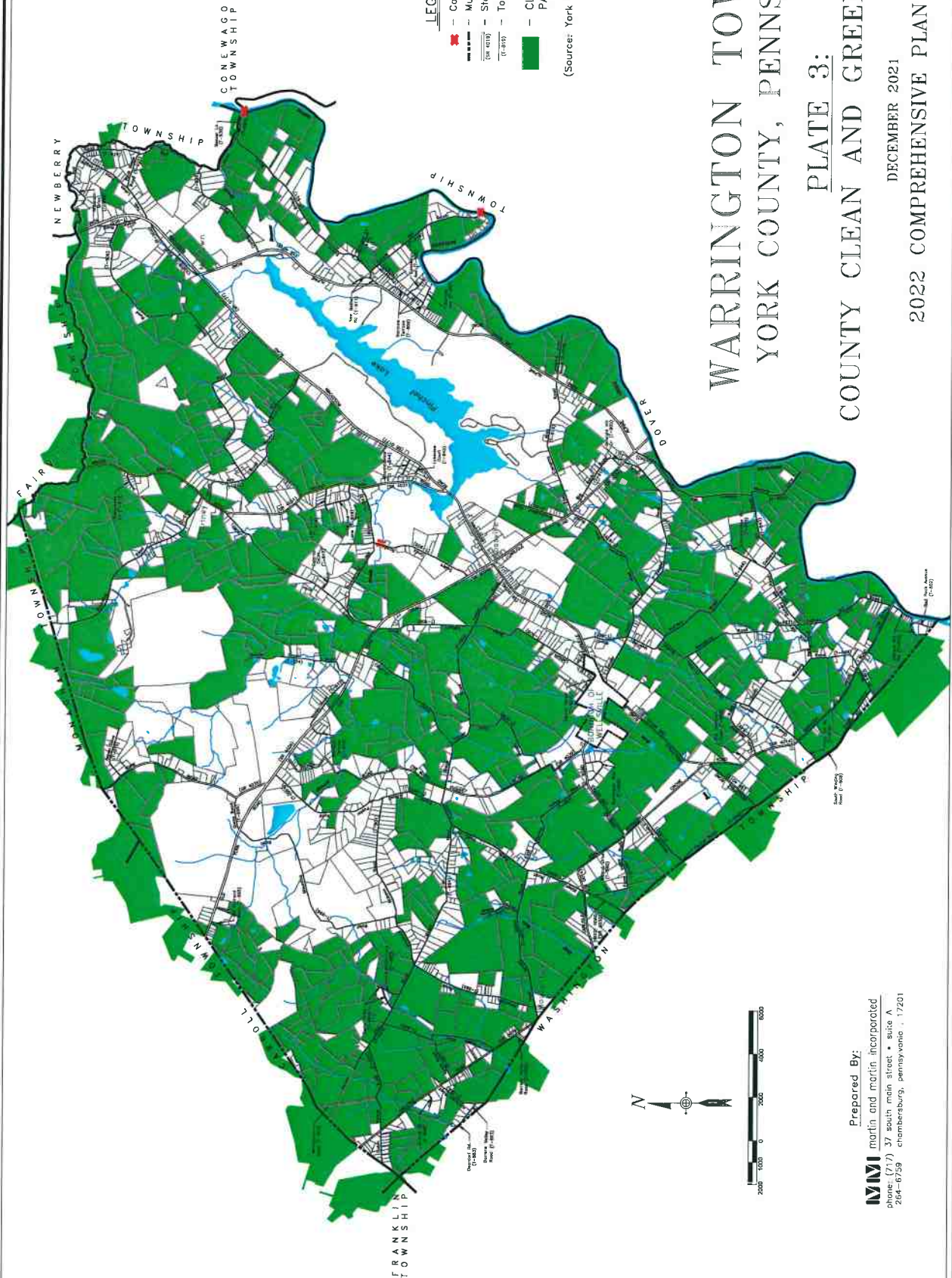
WARRINGTON TOWNSHIP YORK COUNTY, PENNSYLVANIA

PRIME AGRICULTURAL LAND/SOILS CAPABILITY CLASSES

PLATE 2:

DECEMBER 2021
 2022 COMPREHENSIVE PLAN UPDATE

Prepared By:
 M/M martin and martin incorporated
 phone: (717) 37 south main street • suite A
 264-6759 chambersburg, pennsylvania • 17201





- LEGEND**
- County Bridge
 - Municipal Boundary
 - State Road
 - Township Road
 - CLEAN AND GREEN PROGRAM PARTICIPATING PROPERTIES
- (Source: York County Planning Commission)

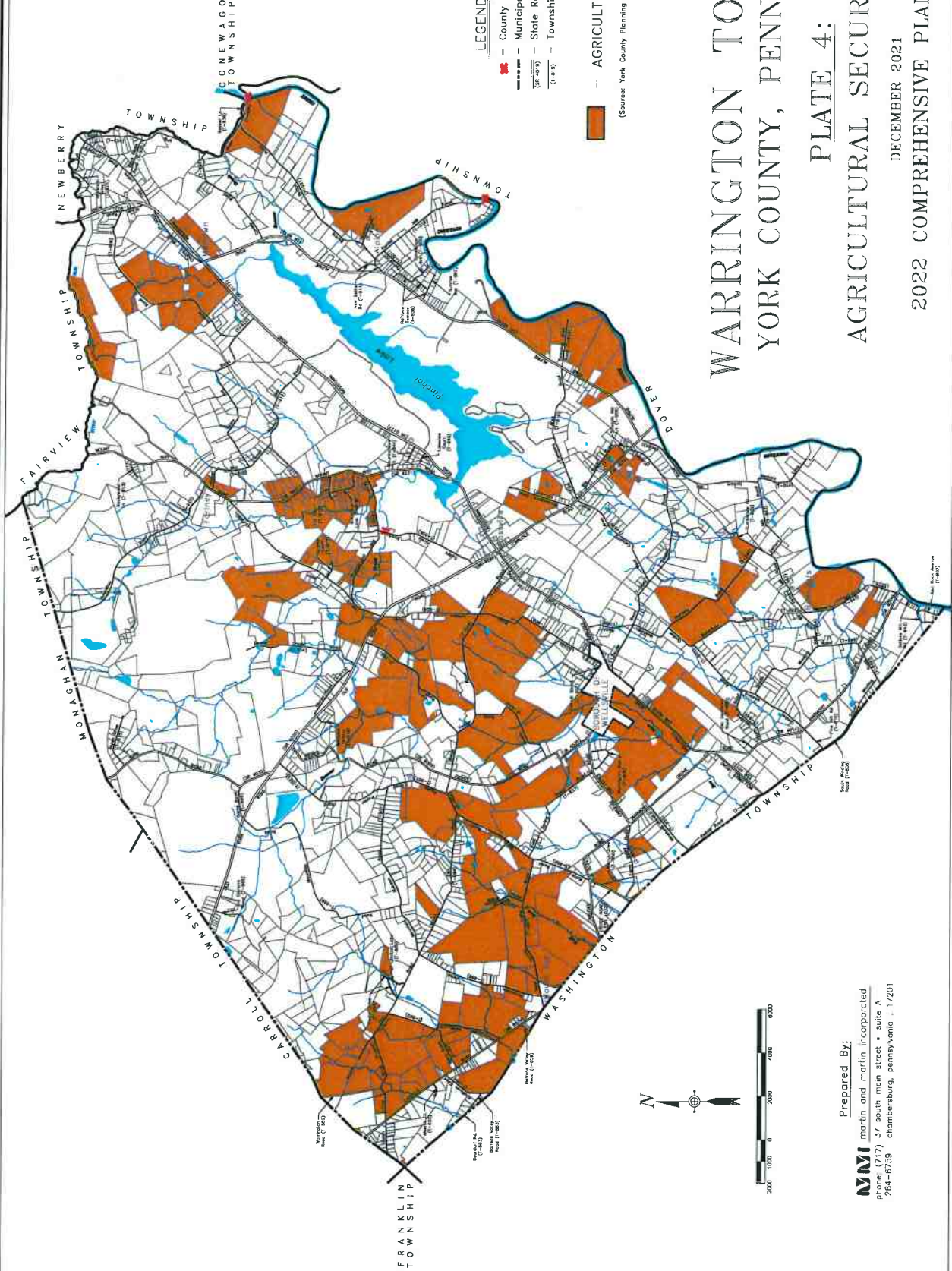
WARRINGTON TOWNSHIP YORK COUNTY, PENNSYLVANIA

PLATE 3: COUNTY CLEAN AND GREEN PROGRAM

DECEMBER 2021
2022 COMPREHENSIVE PLAN UPDATE

Prepared By:
MMI martin and martin incorporated
 phone: (717) 375 main street • suite A
 264-6759 chambersburg, pennsylvania • 17201



LEGEND

- County Bridge
- Municipal Boundary
- State Road
- Township Road

AGRICULTURAL SECURITY AREA

(Source: York County Planning Commission, Warrington Township)

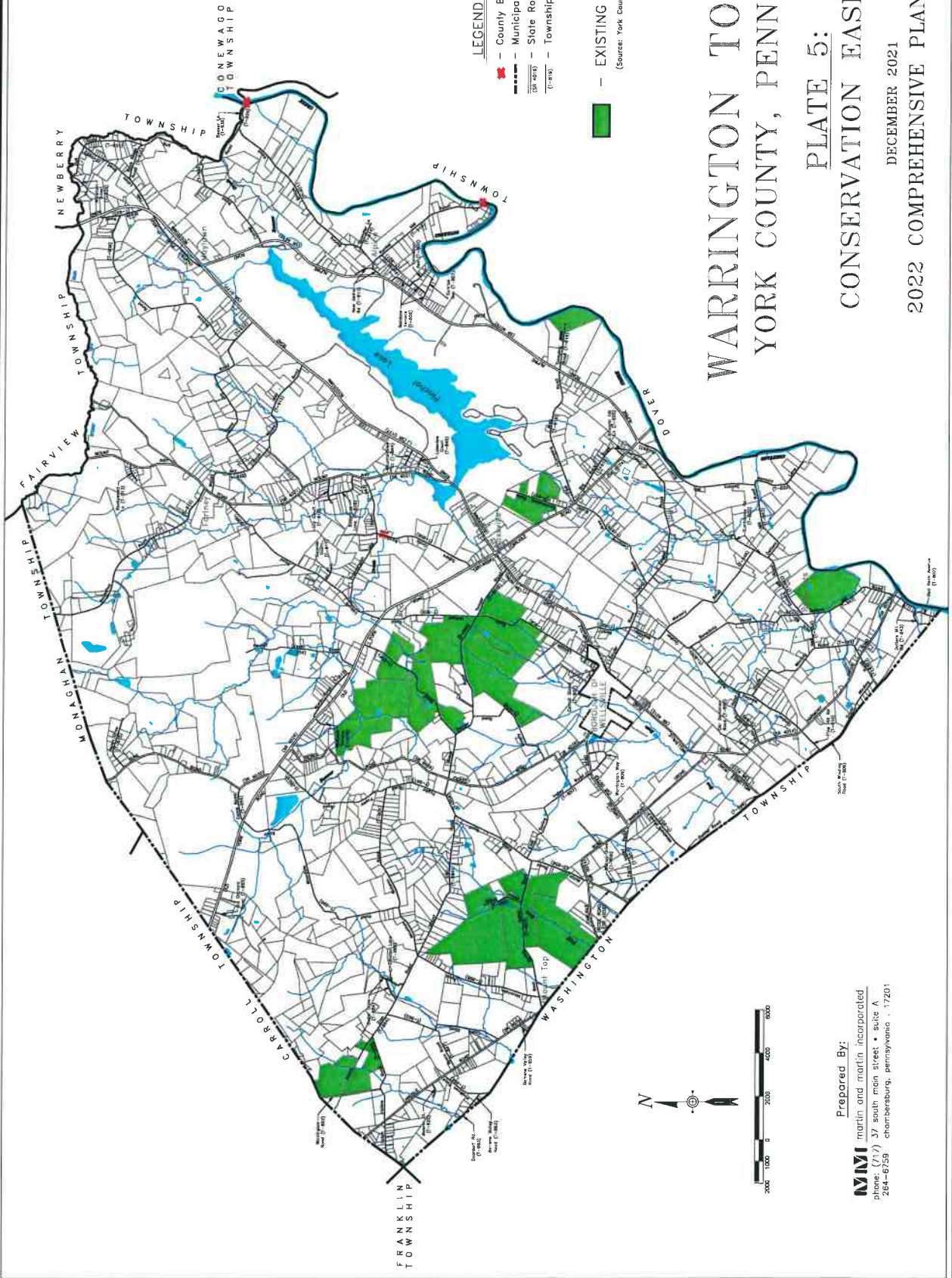
WARRINGTON TOWNSHIP YORK COUNTY, PENNSYLVANIA

PLATE 4: AGRICULTURAL SECURITY AREA

DECEMBER 2021
2022 COMPREHENSIVE PLAN UPDATE



Prepared By:
martin and martin, incorporated
 phone: (717) 377-3000 • suite A
 284-6759 chambersburg, pennsylvania . 17201



LEGEND

-  County Bridge
-  Municipal Boundary
-  State Road
-  Township Road
-  EXISTING CONSERVATION EASEMENT
(Source: York County Planning Commission)

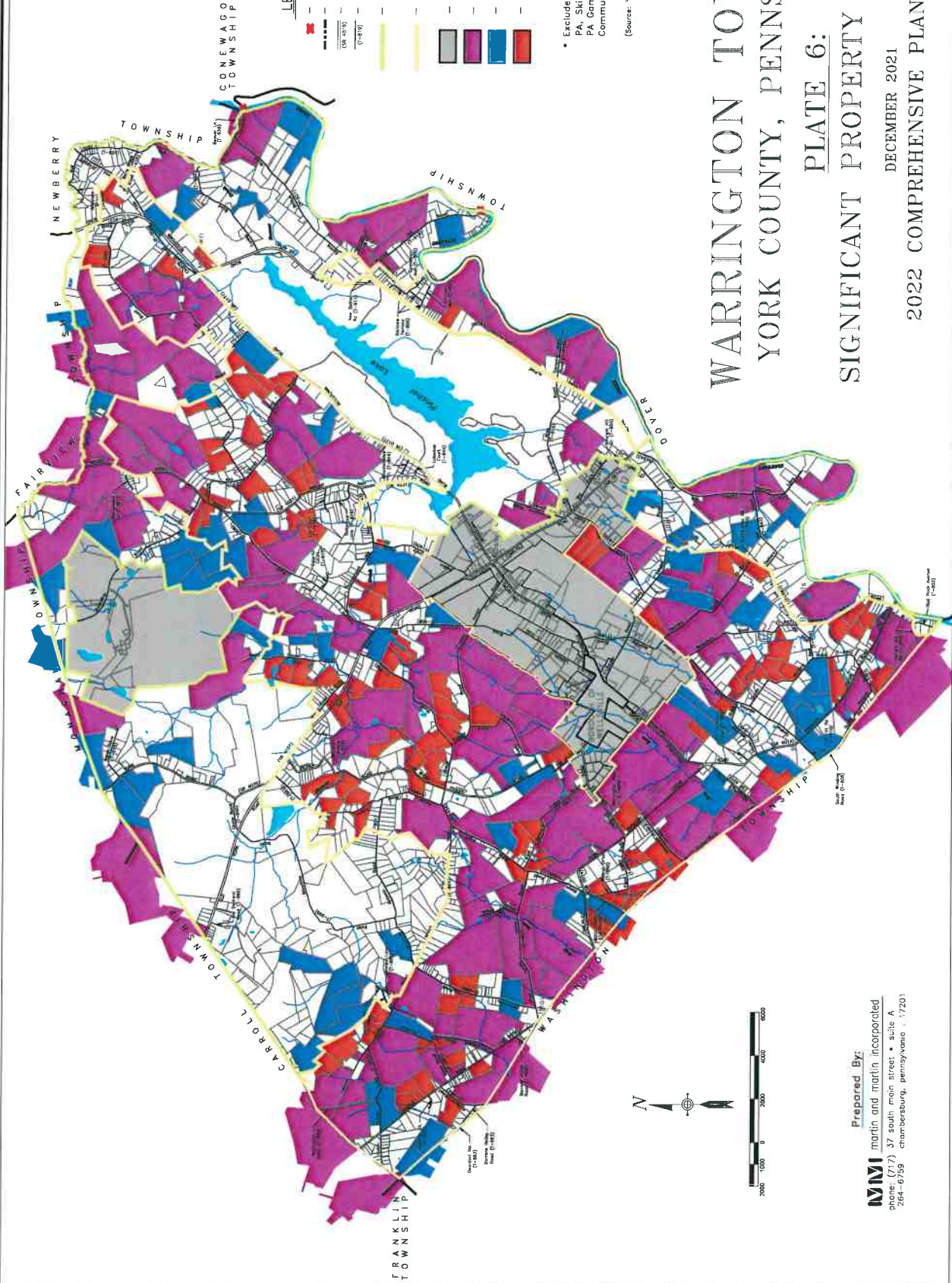
WARRINGTON TOWNSHIP YORK COUNTY, PENNSYLVANIA

PLATE 5: CONSERVATION EASEMENTS

DECEMBER 2021
2022 COMPREHENSIVE PLAN UPDATE



MMI
 martin and martin, incorporated
 377 S. 17th Street • Suite A
 Chambersburg, Pennsylvania • 17201
 Phone: 717-261-6359



LEGEND

- County Bridge
- Municipal Boundary
- State Road
- Township Road
- CONSERVATION ZONE BOUNDARY
- RURAL AGRICULTURAL ZONE BOUNDARY
- AREAS EXCLUDED FROM ANALYSIS
- 50+ ACRES*
- 25 TO 50 ACRES*
- 12 TO 25 ACRES* (Rural Agricultural Zone Only)

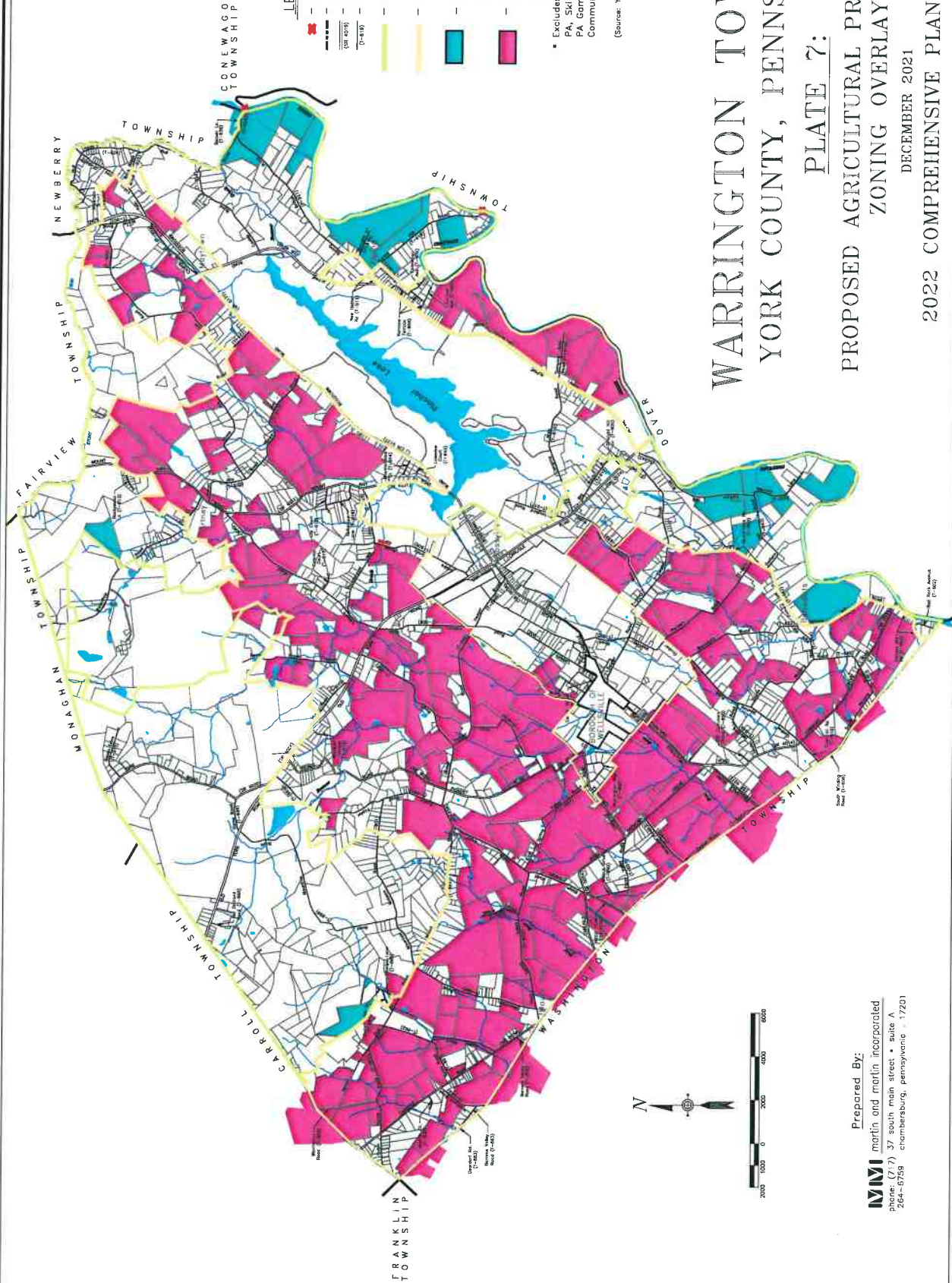
* Excludes Parcels owned by Commonwealth of PA, Ski Roundtop, Gifford Pinchot State Park, PA Game Commission, or leased by Wireless Communication Facilities.

(Source: York County Planning Commission)

WARRINGTON TOWNSHIP YORK COUNTY, PENNSYLVANIA PLATE 6: SIGNIFICANT PROPERTY ACREAGES

DECEMBER 2021
2022 COMPREHENSIVE PLAN UPDATE

Prepared By:
MMI martin and martin, incorporated
phone: (717) 37 south main street • suite A
264-6759 chambersburg, pennsylvania • 17201



- LEGEND**
- County Bridge
 - Municipal Boundary
 - State Road (SR 409)
 - Township Road (TR 400)
 - CONSERVATION ZONE BOUNDARY
 - RURAL AGRICULTURAL ZONE BOUNDARY
 - CONSERVATION ZONE*
30+ Acres with 25%+ Prime Agricultural Land
 - RURAL AGRICULTURAL ZONE*
12+ Acres with 25%+ Prime Agricultural Land

* Excludes Parcels owned by Commonwealth of PA, Ski Roundtop, Gifford Pinchot State Park, PA Game Commission, or leased by Wireless Communication Facilities.
(Source: York County Planning Commission)

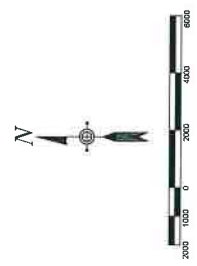
WARRINGTON TOWNSHIP YORK COUNTY, PENNSYLVANIA

PLATE 7:

PROPOSED AGRICULTURAL PRESERVATION ZONING OVERLAY

DECEMBER 2021

2022 COMPREHENSIVE PLAN UPDATE



Prepared By:
MMI martin and martin incorporated
phone: (717) 37 south main street • suite A
264-6755 chambersburg, pennsylvania • 17201